

Melbourne Social Equity Institute

COMMUNITY ENGAGED RESEARCH NETWORK

May 2026 Speakers



DR ELIZA CROSBIE

Research Fellow, Migration and Health Unit
Melbourne School of Population and Global
Health

Migration, refugee settlement, geography, Ubuntu, More-than-human

Selected Current & Recent Projects

- Settling well in regional Australia: experiences of former refugees
- A national framework and toolkit for multicultural inclusion in emergency management



Contact

eliza.crosbie@unimelb.edu.au
LinkedIn – Eliza Crosbie



ASSOC PROFESSOR JULIE CHOI

Language and Literacy Education,
Faculty of Education

*Arts-rich translanguaging pedagogy, multilingual meaning-making,
community-engaged research, affect in language and literacy
learning, children's multilingual literacies*

Selected Current & Recent Projects

- Kimchi is for Everyone: Using Author-Created Mentor Texts to Open Up Community Knowledges
- Arts-Rich Translanguaging Bookmaking in Schools (Primary, Secondary, Graduate)
- Korean Language and Culture Workshops, Immigration Museum (Australia-Korea Foundation)
- Designing Language and Literacy Education for Diverse Learners (Theoretical Framework)



Contact

julie.choi@unimelb.edu.au
blogs.unimelb.edu.au/art-pl
YouTube: ARTP in Action



NINA JOFFEE-KOHN

**Consumer Academic, Coordinator
Consumer Academic Program,
Centre for Mental Health Nursing**

Mental health lived and living experience workforce development, inclusive project design and administration, human rights law including mental health and disability law, anti-discrimination law, refugee/migration law, genocide prevention and Indigenous justice

Selected Current & Recent Projects

- The Mental Health Consumer Lived Experience Workforce Discipline Framework
- The Abolitionist Perspective report and publication



Contact

nina.joffeekohn@unimelb.edu.au



DR TANIA MILETIC

**Co Director, Initiative for Peacebuilding
Senior Research Fellow, School of Social and
Political Sciences**

*Peace and conflict studies, political science with a background in
psychology, trauma-informed collective approaches to peacebuilding*

Selected Current & Recent Projects

- Conflict prevention & peacebuilding in Australian foreign policy
- Australian Diplomatic Experiences in Conflict
- Bougainville Senior Leadership Professional Development Program
- Conflict Transformation in Myanmar
- Australia Afghanistan Dialogues
- Australia South Sudan Peace Leadership Program
- Connections That Matter: Inter-cultural Dialogue and Social Cohesion
- Centring Indigenous and First Nations knowledge in PACS
- Courageous Conversations and Student Peace Leadership



Contact

tmiletic@unimelb.edu.au
[LinkedIn – Tania Miletic](#)
arts.unimelb.edu.au/peacebuilding
peace-meal.org



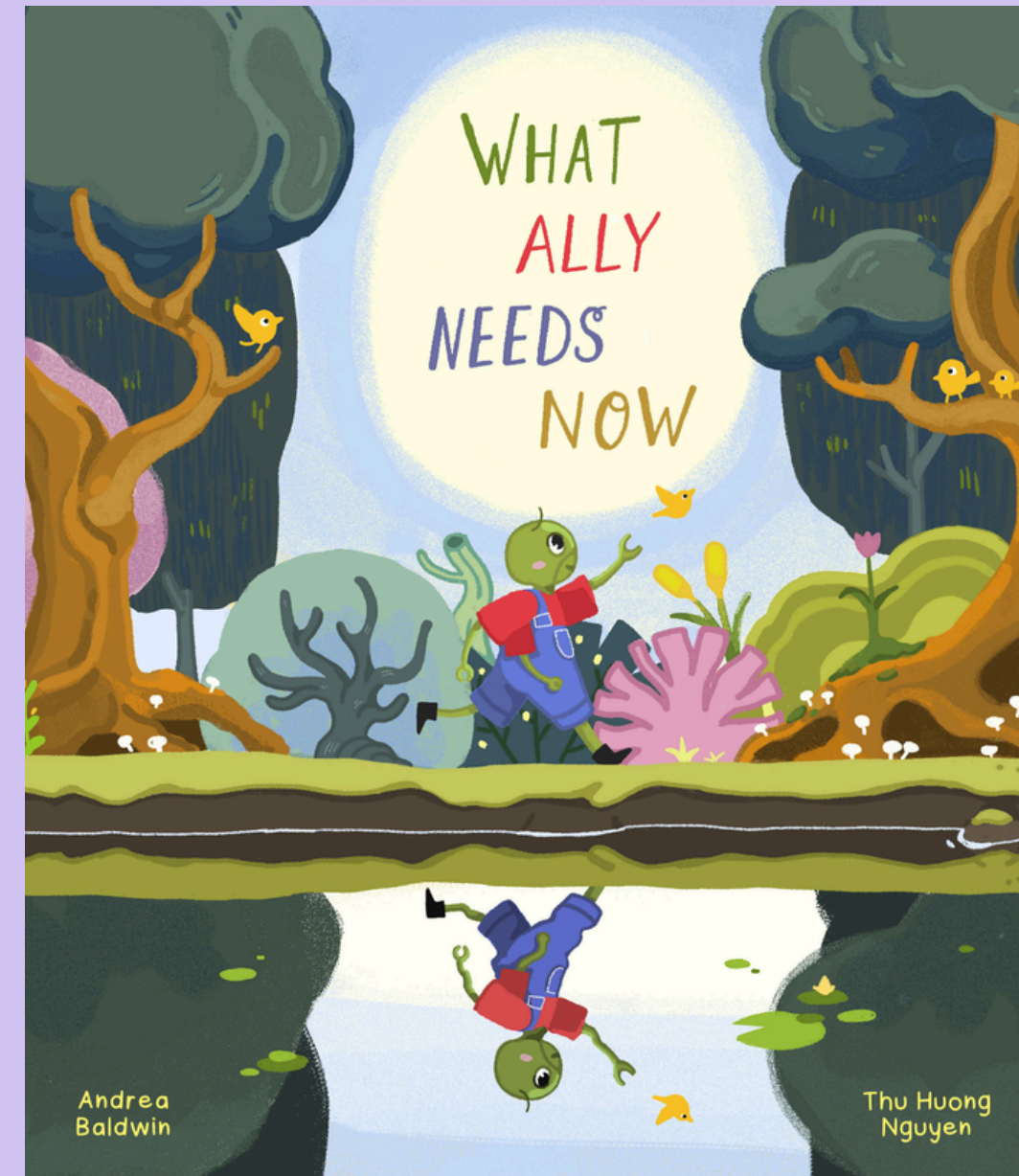
DR KATITZA MARINKOVIC CHAVEZ

Research Fellow, Melbourne School of
Population and Global Health

*Violence, disaster & bereavement; Trauma-informed approaches;
Collective Healing; Participatory and Narrative Practice in Research;
Peer Support*

Selected Current & Recent Project

- The BEETLE Project (Braiding Empathy, Empowerment, Tales & Lived Experience)
- Climate Superpowers
- National Framework and Toolkit for Multicultural Inclusion in Emergencies



Contact

katitza.marinkovic@unimelb.edu.au



Melbourne Social Equity Institute

COMMUNITY ENGAGED RESEARCH NETWORK

March 2026 Speakers



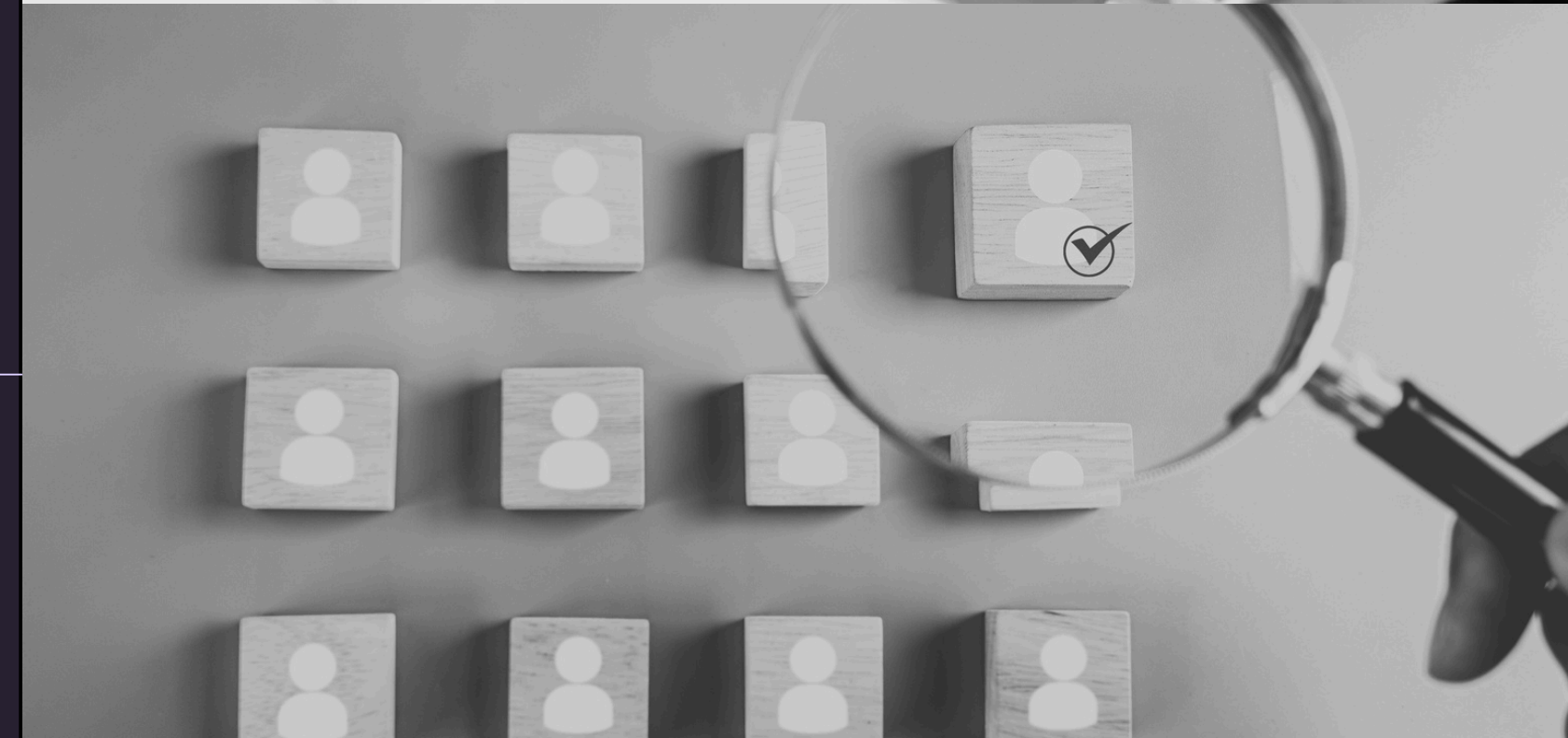
DR NATALIE SHEARD

McKenzie Postdoctoral Fellow,
Melbourne Law School

Algorithm-facilitated discrimination, AI regulation, socio-legal studies

Current Project

- Mapping the Impact of AI in Recruitment for Marginalised Candidates



Contact

n.sheard@unimelb.edu.au
LinkedIn – Natalie Sheard



DR SARAH AUSTIN

Senior Lecturer in Theatre (Contemporary),
ARC DECRA Senior Research Fellow (2026-
2028), Victorian College of the Arts

*Children and young people, rights-based and ethical approaches to
contemporary performance practice, child leadership and cultural agency*

Selected Current & Recent Projects

- An Uncertain Time: Dramaturgical Approaches to Theatre for the Early Years
- Make Some Space: Belonging, Recognition and Relational Safety in Arts Participation with Young People
- Children as Cultural Agents: New Frameworks for Creative Arts Practice (ARC DECRA Project)



[Contact](#)

sarah.austin@unimelb.edu.au



DR NERKEZ OPACIN

Senior Research Fellow in Nature and People, School of Agriculture, Food and Ecosystem Sciences

Nature-based social prescribing, social connection and loneliness, wellbeing and mental health, biodiversity and human-nature relationships, peacebuilding, disaster recovery and community resilience, marginalised communities, migration and refugees, LGBTIQ+ communities, urban nature and cities

Selected Current & Recent Projects

- RECETAS Reimagining Environments for Connection and Engagement: Testing Actions for Social Prescribing in Natural Spaces
- Friends in Nature Casey: Cultivating Connection and Belonging through Living Labs
- Biodiversity Sensitive Urban Design
- Study Melbourne Inclusion Program "Effective Stress Reduction in Nature"



Contact

nerkez.opacin@unimelb.edu.au

[LinkedIn – Nerkez Opacin](#)



JEN HARGRAVE

Honorary Research Fellow,
School of Population and Global Health

Community inclusion, service access, social equity, violence prevention and response

Selected Current & Recent Projects

- Improving disability access to cervical cancer self collection
- People with intellectual disabilities' use of social media during emergencies
- Community Visitors' powers in the NDIS landscape
- Co-designing prevention of violence against women with disabilities
- Violence against disabled people prevalence data
- Women and girls' access to the NDIS



Contact

jen.hargrave@unimelb.edu.au
LinkedIn – Jen Hargrave

